

MADISON, WISCONSIN

CITY OF MADISON

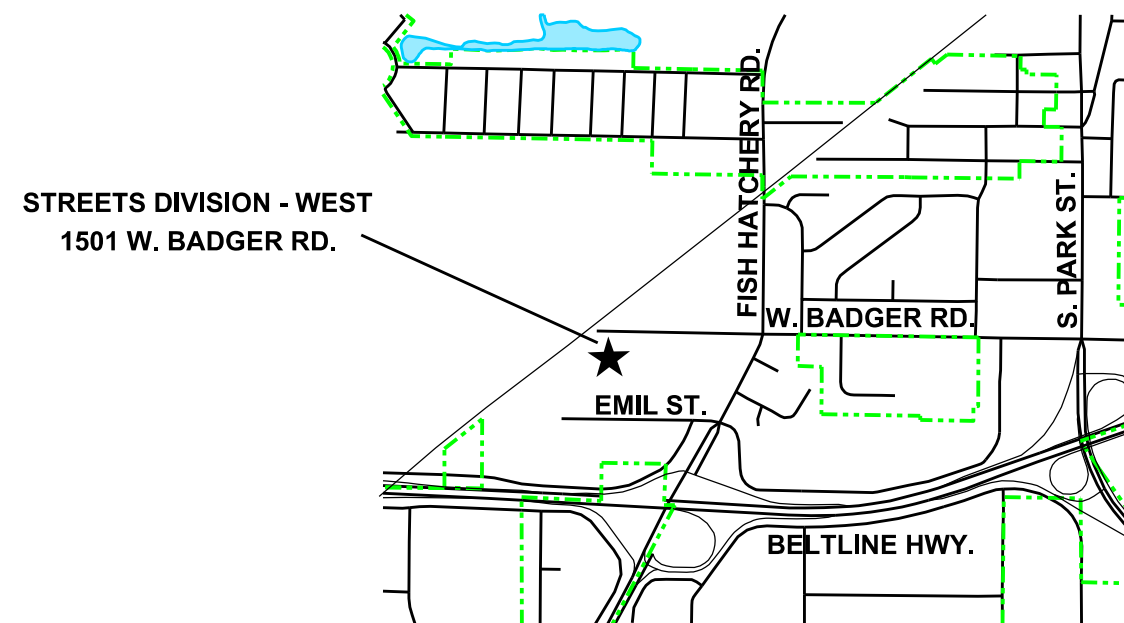
ENGINEERING DIVISION

DEPARTMENT OF PUBLIC WORKS

PLAN OF PROPOSED IMPROVEMENT

WEST BADGER ROAD SALT BARN

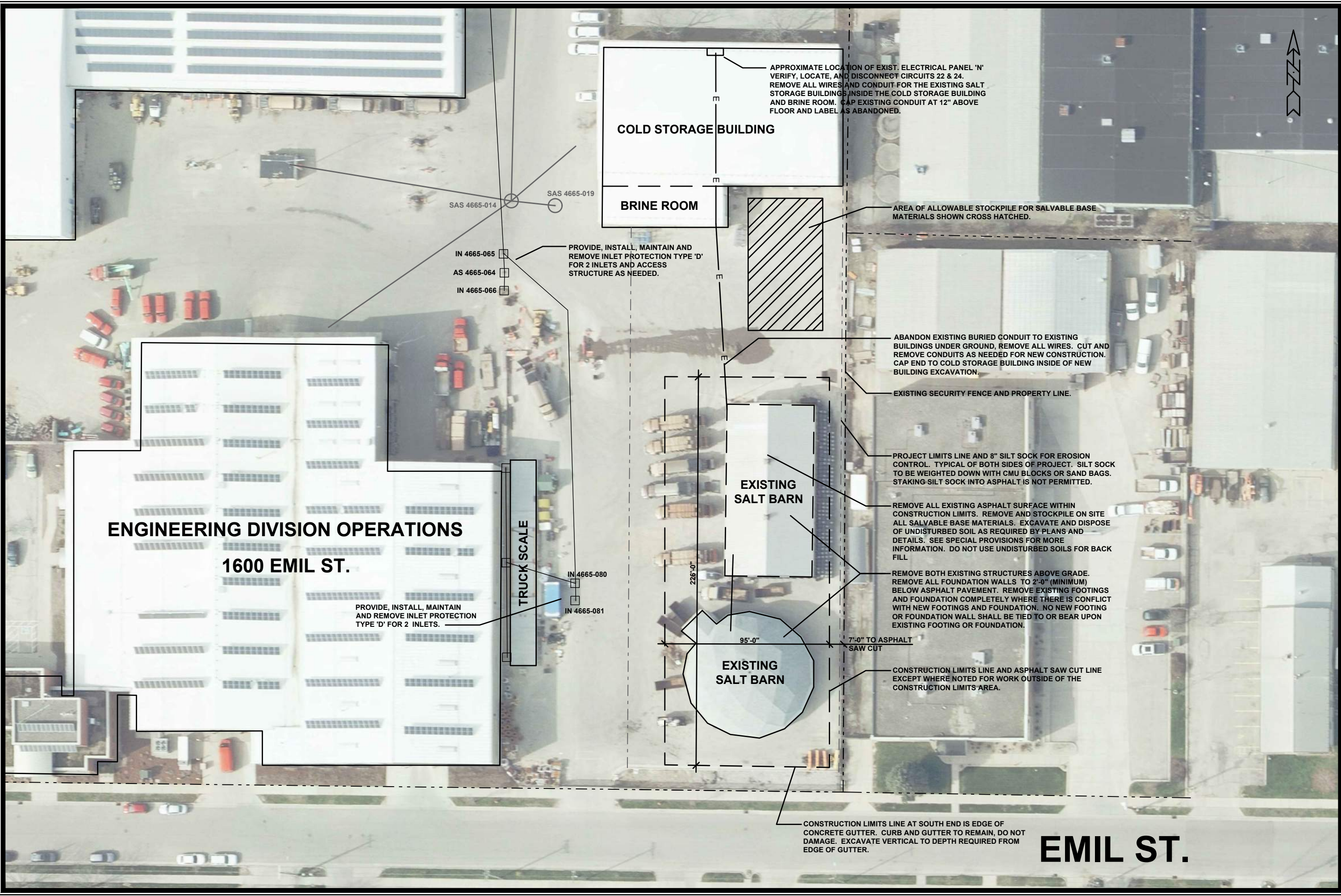
PROJECT NO. 44001
CONTRACT NO. 8605



SHEET INDEX

	TITLE SHEET
GS-1	GENERAL LOCATION PLAN
1	PROJECT LIMITS, EROSION CONTROL AND DEMOLITION PLAN
2	NEW BUILDING LOCATION AND SITE WORK PLAN
3	CONCEPTUAL PLAN AND PERSPECTIVES
4	CONCEPTUAL EXT. ELEVATIONS, PAVING / DRAINAGE PLANS
5	SITE CONSTRUCTION DETAILS
6	CONCEPTUAL INTERIOR ELEVATIONS AND PAINT MARKING
7	ELECTRICAL AND LIGHTING PLANS
EL-100	EXTERIOR LIGHTING PHOTOMETRICS AND SCHEDULE

<p>PUBLIC WORKS IMPROVEMENT PROJECT</p>	<p>PUBLIC WORKS IMPROVEMENT DESIGN</p>
<p>APPROVED BY THE COMMON COUNCIL OF MADISON WISCONSIN</p>	<p>APPROVED BY</p>
<p>RESOLUTION: RES-22-00197</p>	<p><i>Christy Bachmann for</i> CITY ENGINEER</p>
<p>FILE ID: 69912</p>	<p>4/25/2022</p>
<p>DATE: MARCH 29, 2022</p>	<p>DATE</p>



COLD STORAGE BUILDING

BRINE ROOM

APPROXIMATE LOCATION OF EXIST. ELECTRICAL PANEL 'N'. VERIFY, LOCATE, AND DISCONNECT CIRCUITS 22 & 24. REMOVE ALL WIRES AND CONDUIT FOR THE EXISTING SALT STORAGE BUILDINGS INSIDE THE COLD STORAGE BUILDING AND BRINE ROOM. CAP EXISTING CONDUIT AT 12" ABOVE FLOOR AND LABEL AS ABANDONED.

PROVIDE, INSTALL, MAINTAIN AND REMOVE INLET PROTECTION TYPE 'D' FOR 2 INLETS AND ACCESS STRUCTURE AS NEEDED.

AREA OF ALLOWABLE STOCKPILE FOR SALVABLE BASE MATERIALS SHOWN CROSS HATCHED.

ABANDON EXISTING BURIED CONDUIT TO EXISTING BUILDINGS UNDER GROUND, REMOVE ALL WIRES. CUT AND REMOVE CONDUITS AS NEEDED FOR NEW CONSTRUCTION. CAP END TO COLD STORAGE BUILDING INSIDE OF NEW BUILDING EXCAVATION.

EXISTING SECURITY FENCE AND PROPERTY LINE.

PROJECT LIMITS LINE AND 8" SILT SOCK FOR EROSION CONTROL. TYPICAL OF BOTH SIDES OF PROJECT. SILT SOCK TO BE WEIGHTED DOWN WITH CMU BLOCKS OR SAND BAGS. STAKING SILT SOCK INTO ASPHALT IS NOT PERMITTED.

REMOVE ALL EXISTING ASPHALT SURFACE WITHIN CONSTRUCTION LIMITS. REMOVE AND STOCKPILE ON SITE ALL SALVABLE BASE MATERIALS. EXCAVATE AND DISPOSE OF UNDISTURBED SOIL AS REQUIRED BY PLANS AND DETAILS. SEE SPECIAL PROVISIONS FOR MORE INFORMATION. DO NOT USE UNDISTURBED SOILS FOR BACK FILL.

REMOVE BOTH EXISTING STRUCTURES ABOVE GRADE. REMOVE ALL FOUNDATION WALLS TO 2'-0" (MINIMUM) BELOW ASPHALT PAVEMENT. REMOVE EXISTING FOOTINGS AND FOUNDATION COMPLETELY WHERE THERE IS CONFLICT WITH NEW FOOTINGS AND FOUNDATION. NO NEW FOOTING OR FOUNDATION WALL SHALL BE TIED TO OR BEAR UPON EXISTING FOOTING OR FOUNDATION.

CONSTRUCTION LIMITS LINE AND ASPHALT SAW CUT LINE EXCEPT WHERE NOTED FOR WORK OUTSIDE OF THE CONSTRUCTION LIMITS AREA.

CONSTRUCTION LIMITS LINE AT SOUTH END IS EDGE OF CONCRETE GUTTER. CURB AND GUTTER TO REMAIN, DO NOT DAMAGE. EXCAVATE VERTICAL TO DEPTH REQUIRED FROM EDGE OF GUTTER.

**ENGINEERING DIVISION OPERATIONS
1600 EMIL ST.**

TRUCK SCALE

EXISTING SALT BARN

EXISTING SALT BARN



4/17/2022	RSW	##	##	##	##	##	##
Bid Set	##	##	##	##	##	##	##
MARK	##	##	##	##	##	##	##
REVISION	##	##	##	##	##	##	##
DESIGNED BY	RSW	DATE	4/22/2022	TIME	4:44 PM	SCALE	1" = 50'
PROJECT NO.	44001	CITY OF MADISON	WISCONSIN	CONTRACT NO.	8605	DATE	BY

PROJECT LIMITS, EROSION CONTROL, DEMOLITION PLAN

BADGER ROAD SALT BARN

44001

MADISON, WI

8605

CONTRACT NO:



44001

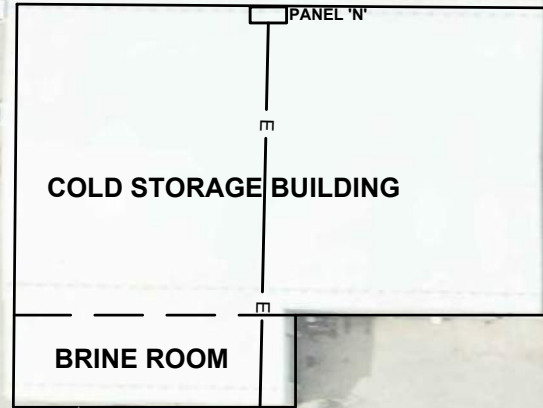
1

EMIL ST.

**ENGINEERING DIVISION OPERATIONS
1600 EMIL ST.**

SET BACK AND BUILDING DIMENSIONS ARE BASED ON THE CONCEPTUAL STRUCTURE DESIGN ONLY. CONTRACTOR SHALL VERIFY FINAL BUILDING DESIGN AND PLACEMENT WITH THE CITY PROJECT MANAGER PRIOR TO STAKING BUILDING CORNERS AND STARTING EXCAVATION.

TRUCK SCALE



BRINE ROOM

COLD STORAGE BUILDING

UTILITY TRENCH PATCH FOR ELECTRICAL CONDUITS UP ON OUTSIDE OF BUILDING TO ABOVE FOUNDATION WALL, THRU METAL BUILDING WALL TO INSIDE. CAP 3" SCH 80 PVC FOR FUTURE PV SOLAR. RUN 3" SCH. 80 PVC TO EXIST. PANEL 'N' FOR NEW SALT BARN POWER. REUSE AVAILABLE CIRCUITS. ALL CUTTING AND PATCHING BY CONTRACTOR SHALL BE WEATHER TIGHT AND NEAT IN APPEARANCE.

CENTER OF UTILITY TRENCH PATCH FOR ELECTRICAL. SEE SPECIAL PROVISIONS FOR REQUIREMENTS. ALL BENDS UNDER GROUND SHALL BE LARGE RADIUS BENDS. NO BURIED PULL BOXES WILL BE ALLOWED.

NEW ASPHALT PAVING AND CONCRETE PAVING SHOWN CROSSHATCHED. SEE CONCEPTUAL PLANS AND DETAILS FOR MORE INFORMATION.

**NEW SALT BARN
(BASE BID)**

**NEW DIRT BARN
(ALT. BID #1)**

10'-0" OFFSET TO
FACE OF FOOTING

16'-6" OFFSET TO
FACE OF FOOTING

172'-0"

41'-0"

20'-0"

82'-0"

20'-0"

62'-0"

13'-6"



EMIL ST.

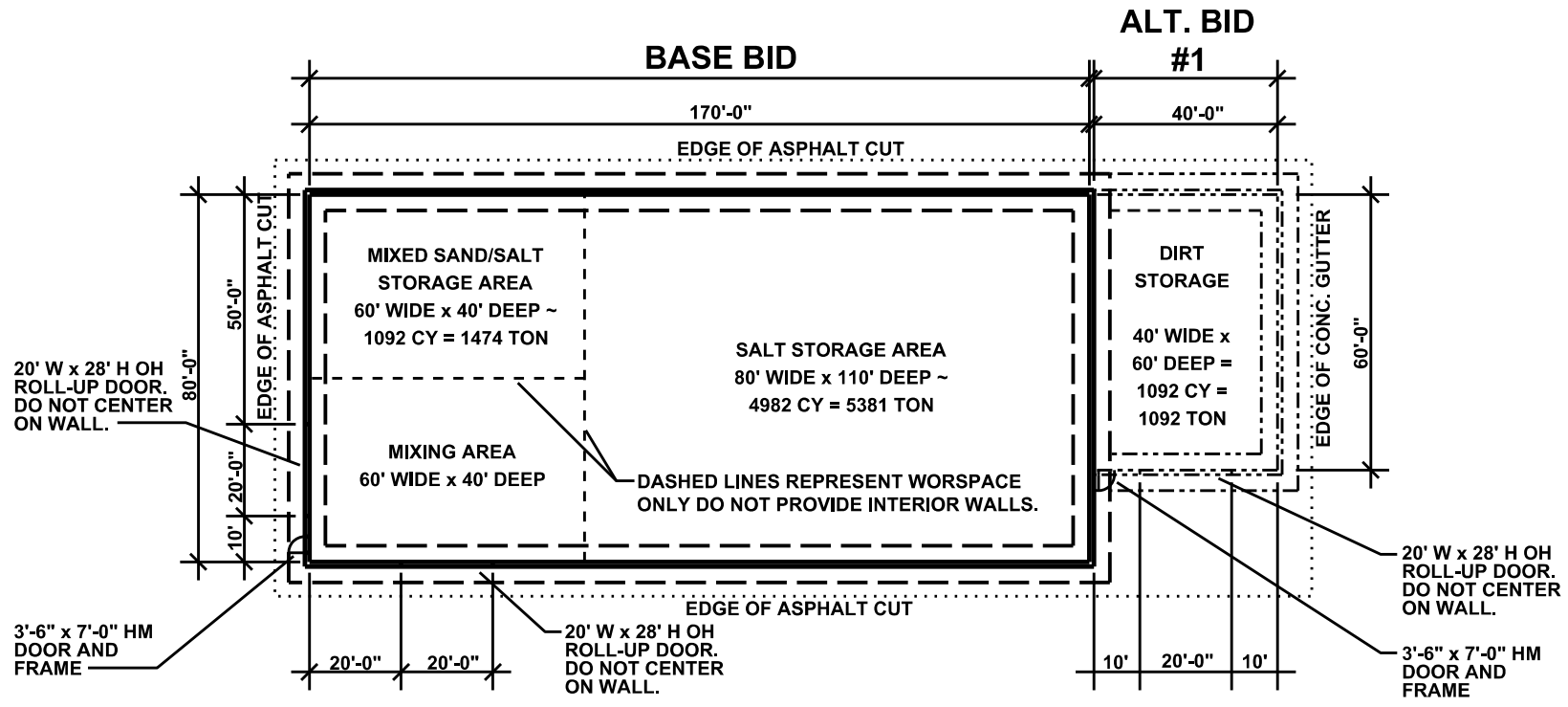
0	4/17/2022	RSW						
1	###	###	###	###	###	###	###	###
2	###	###	###	###	###	###	###	###
3	###	###	###	###	###	###	###	###
4	###	###	###	###	###	###	###	###
5	###	###	###	###	###	###	###	###
6	###	###	###	###	###	###	###	###
7	###	###	###	###	###	###	###	###
8	###	###	###	###	###	###	###	###
9	###	###	###	###	###	###	###	###
10	###	###	###	###	###	###	###	###
11	###	###	###	###	###	###	###	###
12	###	###	###	###	###	###	###	###
13	###	###	###	###	###	###	###	###
14	###	###	###	###	###	###	###	###
15	###	###	###	###	###	###	###	###
16	###	###	###	###	###	###	###	###
17	###	###	###	###	###	###	###	###
18	###	###	###	###	###	###	###	###
19	###	###	###	###	###	###	###	###
20	###	###	###	###	###	###	###	###
21	###	###	###	###	###	###	###	###
22	###	###	###	###	###	###	###	###
23	###	###	###	###	###	###	###	###
24	###	###	###	###	###	###	###	###
25	###	###	###	###	###	###	###	###
26	###	###	###	###	###	###	###	###
27	###	###	###	###	###	###	###	###
28	###	###	###	###	###	###	###	###
29	###	###	###	###	###	###	###	###
30	###	###	###	###	###	###	###	###
31	###	###	###	###	###	###	###	###
32	###	###	###	###	###	###	###	###
33	###	###	###	###	###	###	###	###
34	###	###	###	###	###	###	###	###
35	###	###	###	###	###	###	###	###
36	###	###	###	###	###	###	###	###
37	###	###	###	###	###	###	###	###
38	###	###	###	###	###	###	###	###
39	###	###	###	###	###	###	###	###
40	###	###	###	###	###	###	###	###
41	###	###	###	###	###	###	###	###
42	###	###	###	###	###	###	###	###
43	###	###	###	###	###	###	###	###
44	###	###	###	###	###	###	###	###
45	###	###	###	###	###	###	###	###
46	###	###	###	###	###	###	###	###
47	###	###	###	###	###	###	###	###
48	###	###	###	###	###	###	###	###
49	###	###	###	###	###	###	###	###
50	###	###	###	###	###	###	###	###

44001
MADISON, WI
8605
CONTRACT NO: 44001

NEW BUILDING LOCATION AND SITE WORK PLAN
BADGER ROAD SALT BARN
C:\Users\tenrsw\Desktop\Badger Salt Barn\2D Site Plan.dwg



44001
2

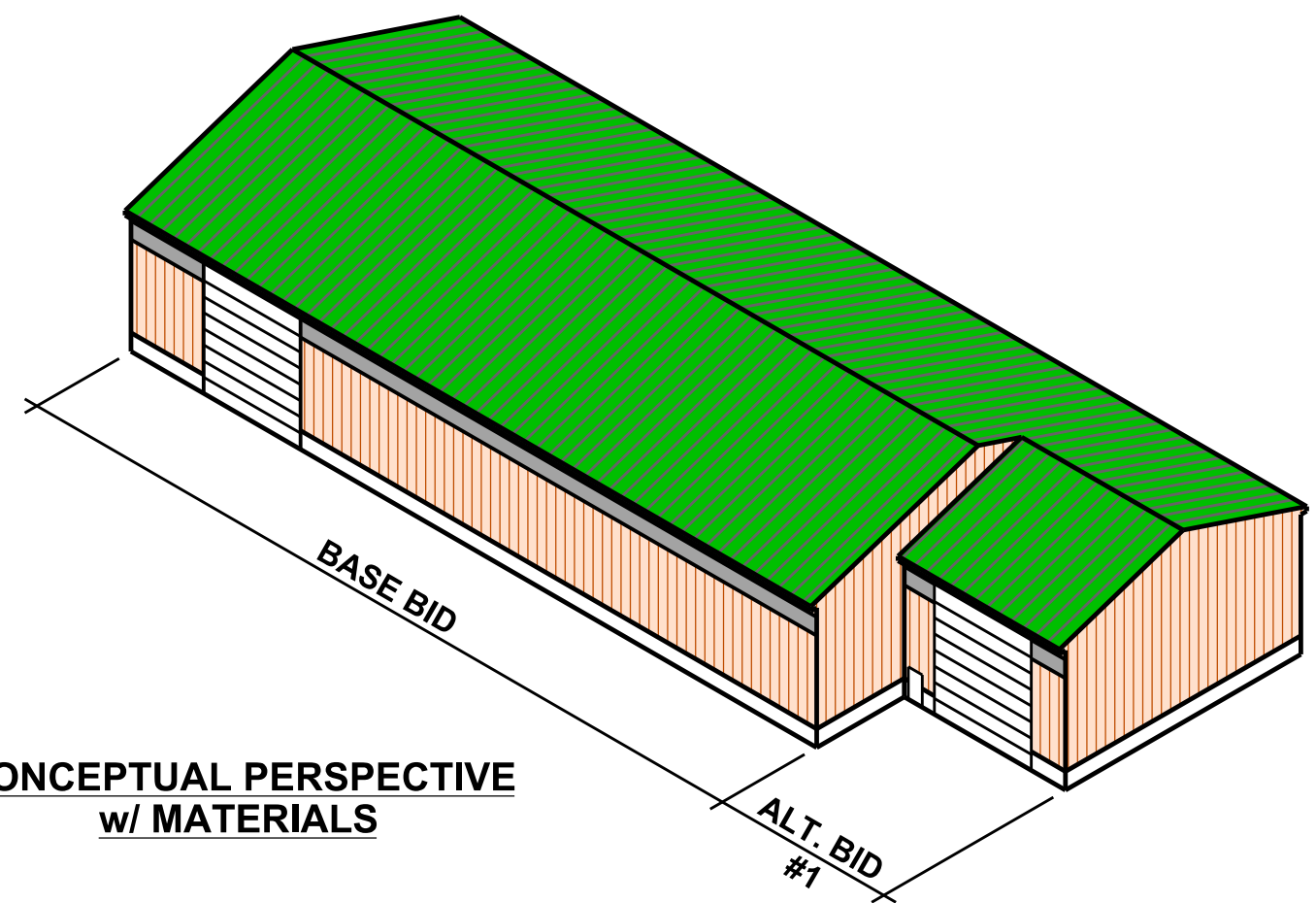


GENERAL NOTES:

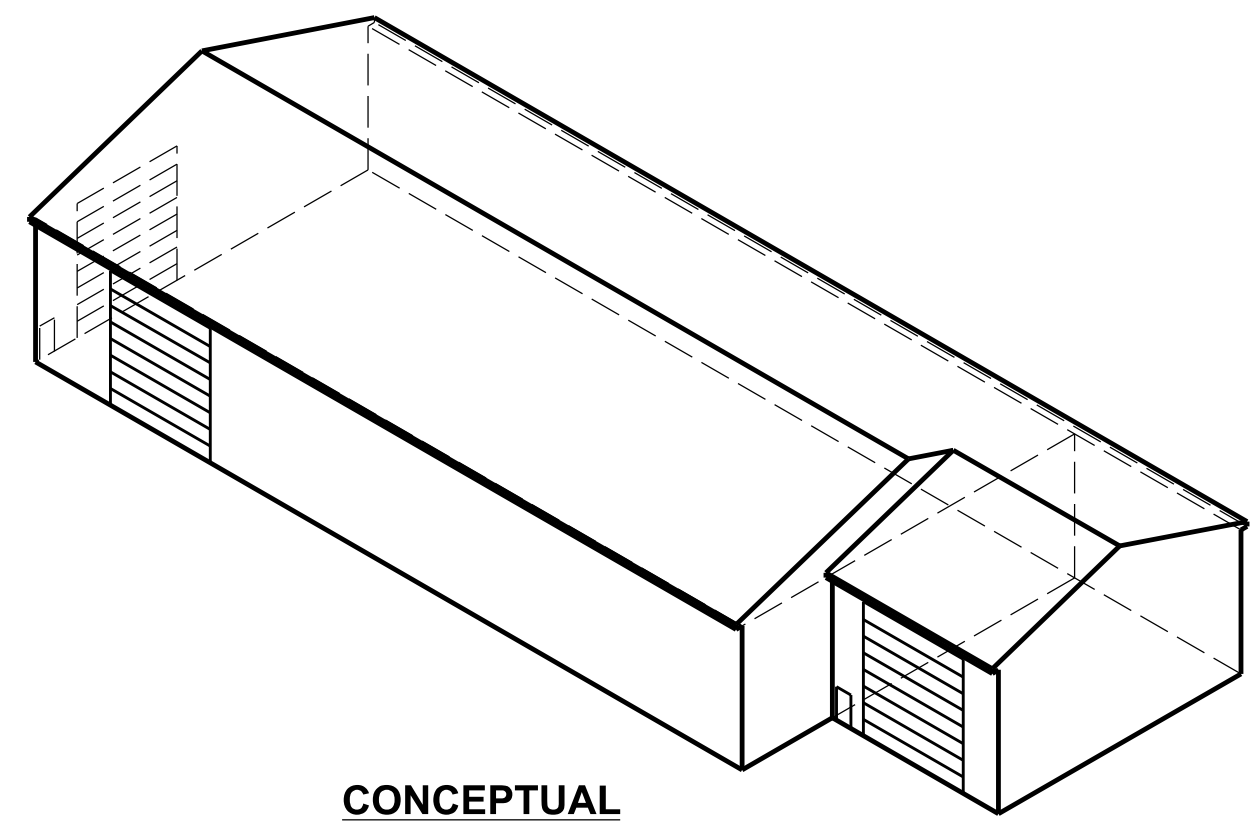
1. CONCEPTUAL DRAWINGS ONLY FOR BASIS OF DESIGN (BOD). NOT FOR CONSTRUCTION. SEE SPECIFICATION 41 52 00 BULK MATERIAL STORAGE FOR MORE INFORMATION.
2. DIMENSIONS SHOWN ON CONCEPTUAL PLAN ARE INSIDE FOUNDATION DIMENSIONS USED FOR CALCULATING STORAGE QUANTITIES OF BOD. CONTRACTOR SHALL VERIFY DESIGN DIMENSIONS WITH SITE PLAN AND CITY PROJECT MANAGER PRIOR TO BUILDING LAYOUT AND STAKING.
3. ALL FOOTINGS AND FOUNDATION WALLS TO BE POURED, REINFORCED CONCRETE.
4. NO EXTERIOR KNEE BRACING IS PERMITTED.
5. ROOF TRUSSES SHALL BE CLEAR SPAN GABLE STYLE TRUSSES ONLY, WITH NO INTERIOR KNEE BRACING. GAMBREL ROOF TRUSSING IS NOT PERMITTED.
6. NO INTERIOR T-WALLS ARE PERMITTED.
7. DOOR DIMENSION LOCATIONS ARE APPROXIMATE AND MAY BE ADJUSTED AS NEEDED TO ACCOMMODATE STRUCTURAL FEATURES.



CONCEPTUAL FLOOR PLAN



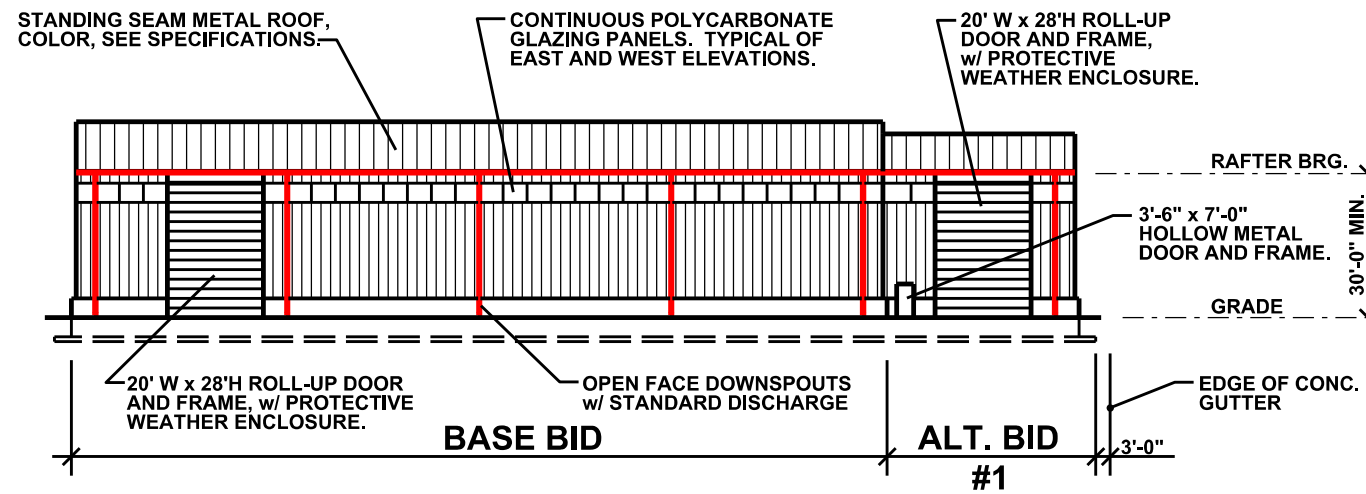
**CONCEPTUAL PERSPECTIVE
w/ MATERIALS**



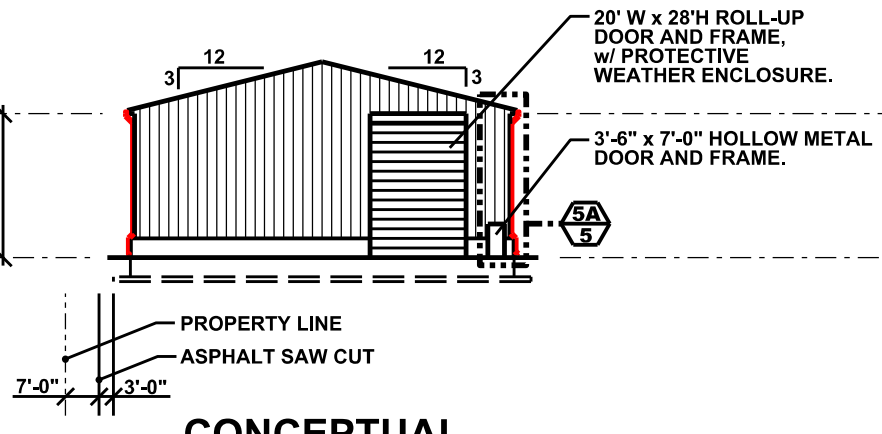
**CONCEPTUAL
PERSPECTIVE**

**CITY OF MADISON - ENGINEERING
CONTRACT 8605
WEST BADGER RD. SALT BARN**

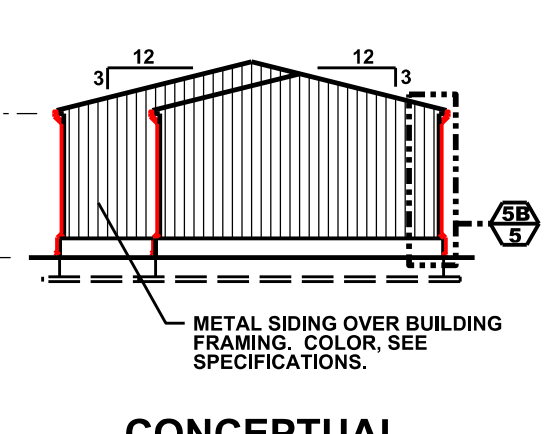
**CONCEPTUAL PLAN
AND PERSPECTIVES**



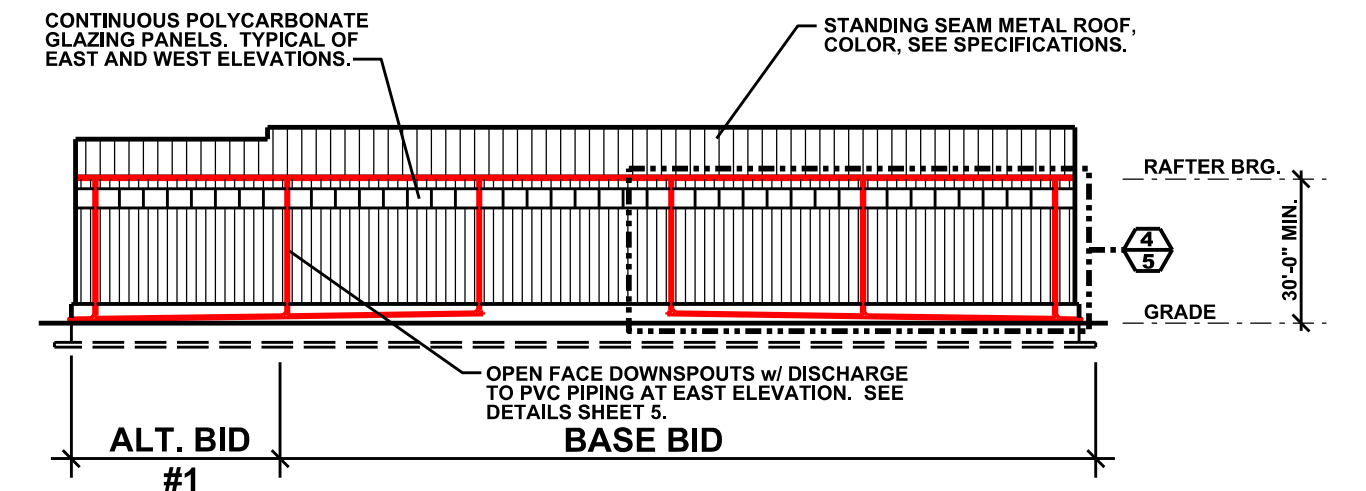
CONCEPTUAL WEST ELEVATION



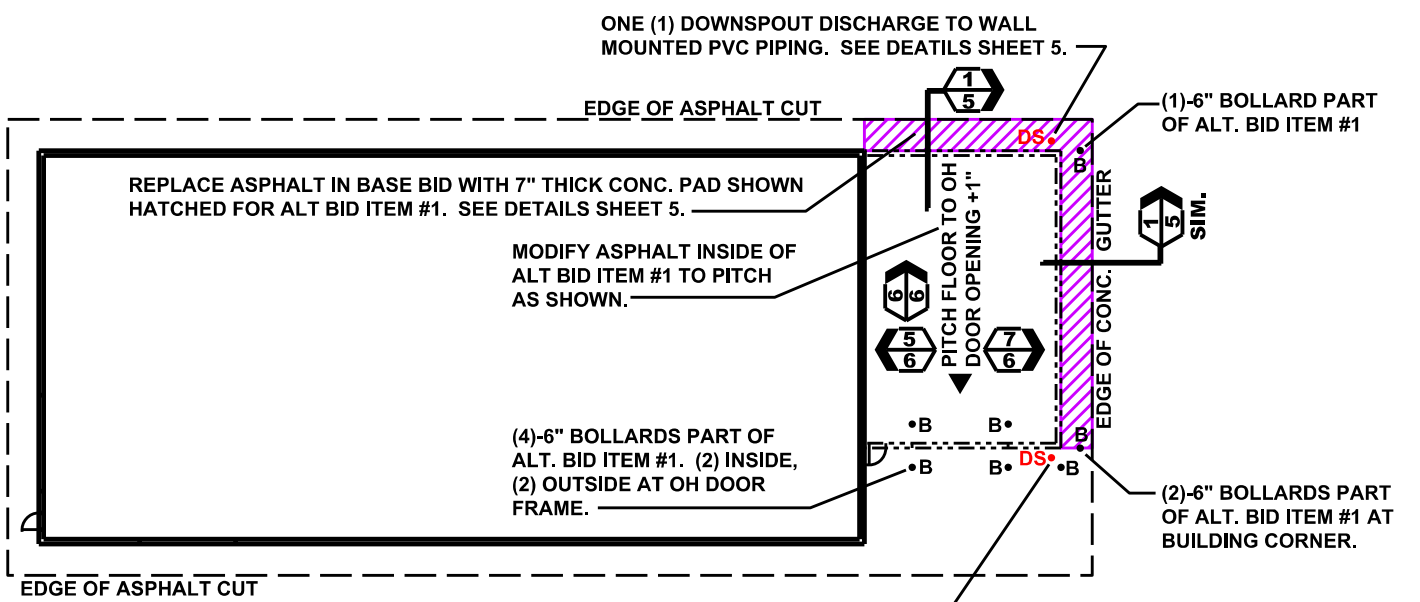
CONCEPTUAL NORTH ELEVATION



CONCEPTUAL SOUTH ELEVATION

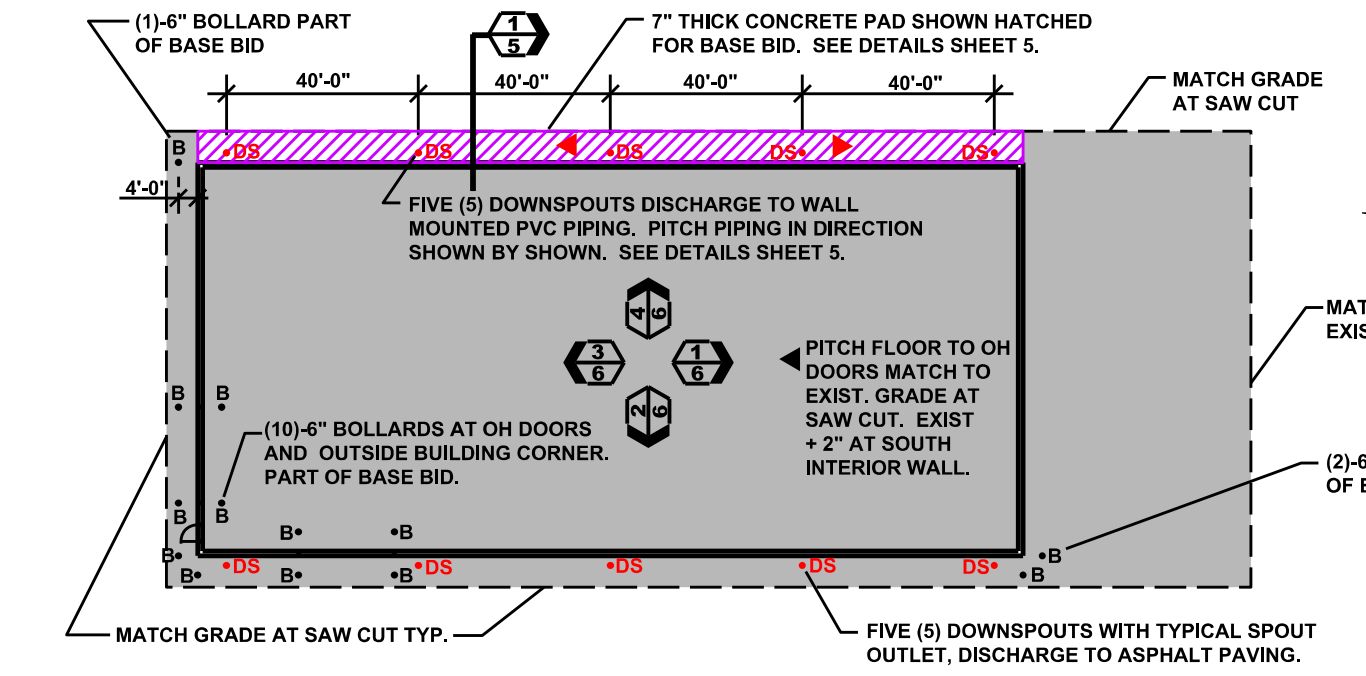


CONCEPTUAL EAST ELEVATION

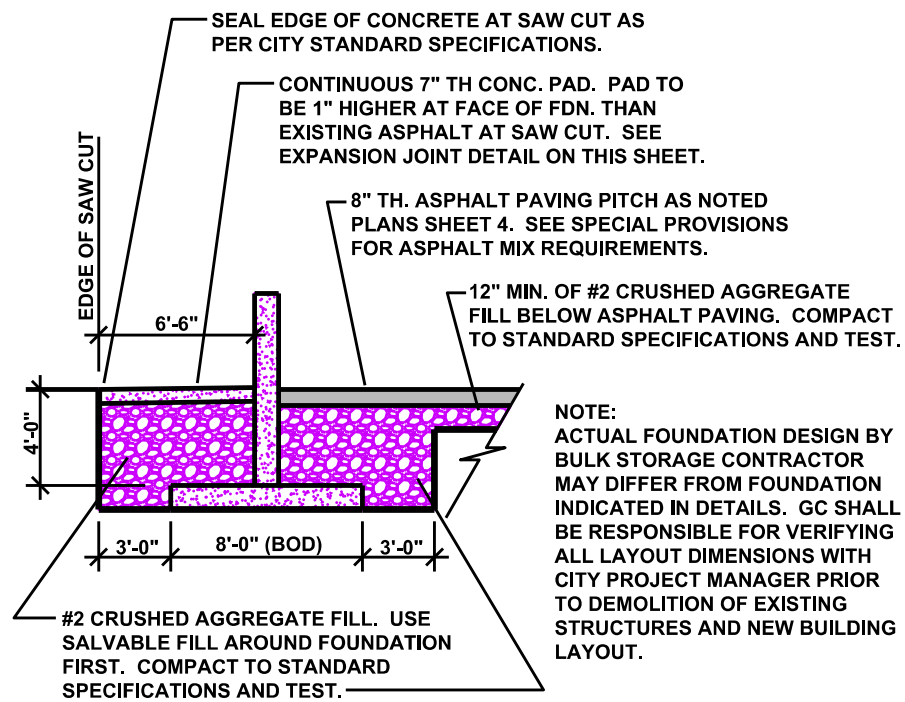


PAVING AND DRAINAGE PLAN FOR ALT BID #1

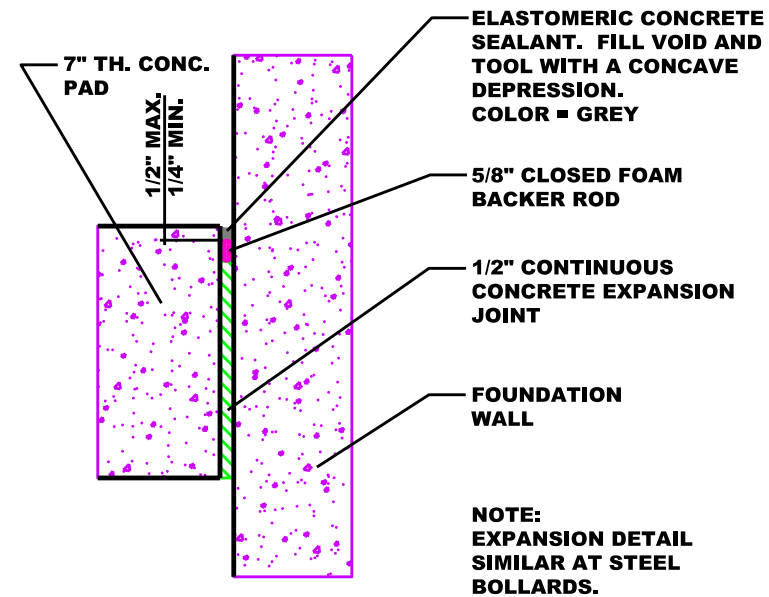
- GENERAL PAVING AND DRAINAGE NOTES:
1. SHADED AREA INDICATES AGGREGATE BASE #2 AND NEW ASPHALT PAVING. SEE DETAILS SHEET 5. ALL PART OF BASE BID.
 2. SEE SPECIAL PROVISIONS FOR ASPHALT DEPTH AND MIX REQUIREMENTS.
 - X. ALL BOLLARDS ARE 4'-0" FROM FACE OF FOUNDATION AND 90 DEGREES TO BUILDING CORNERS AND OVERHEAD DOOR JAMBS. SEE DETAIL X SHEET 5 FOR DETAIL.



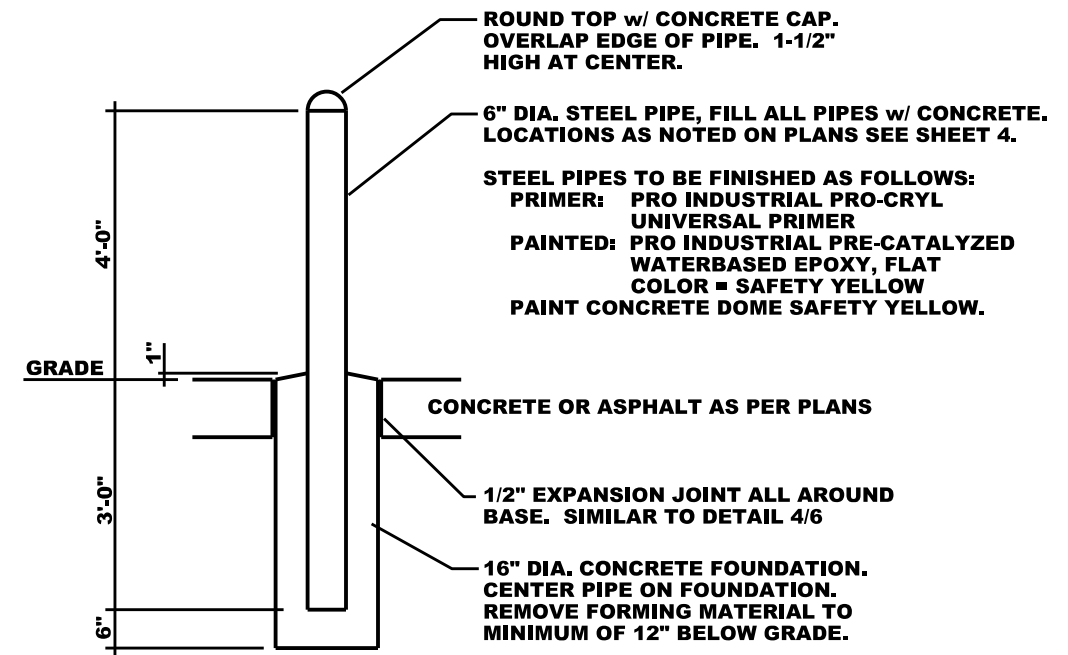
PAVING AND DRAINAGE PLAN FOR BASE BID



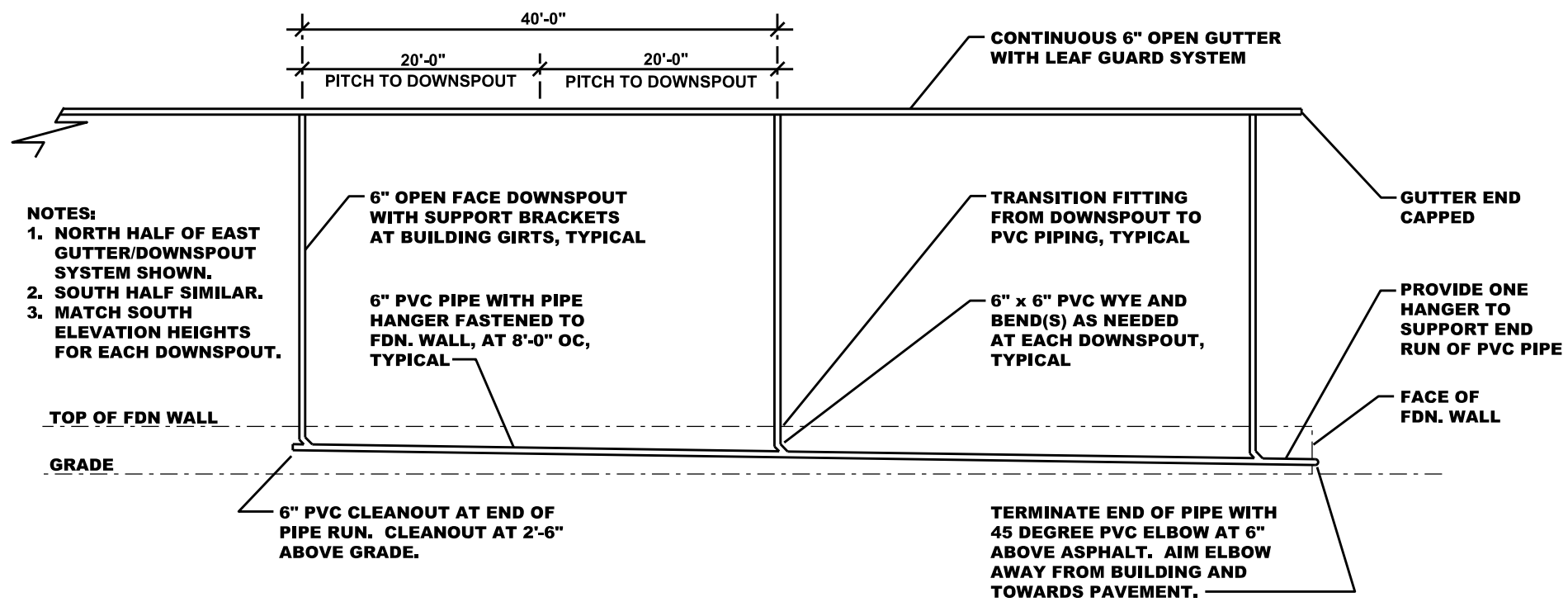
1. FOUNDATION BACKFILL DETAIL



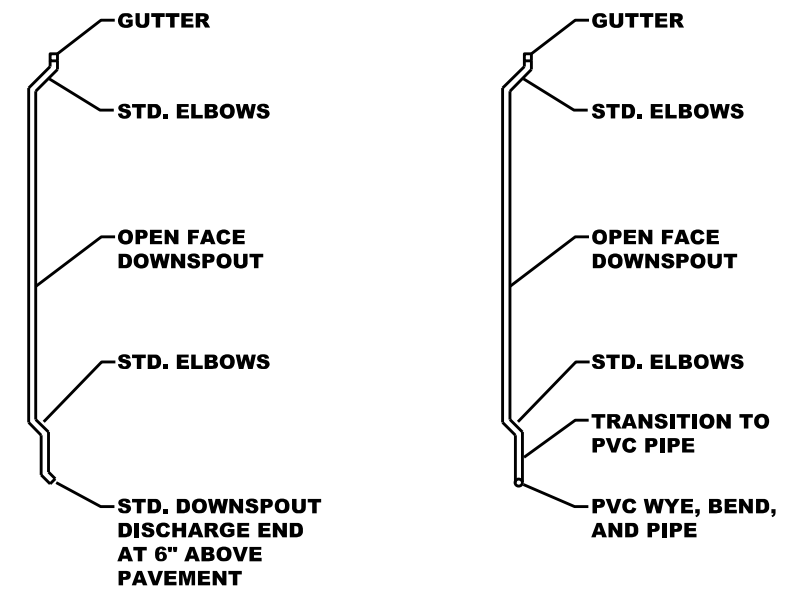
2. EXPANSION JOINT DETAIL



3. STEEL BOLLARD DETAIL



4. ENLARGED PARTIAL EAST GUTTER/DOWNSPOUT ELEVATION



5A. WEST SIDE

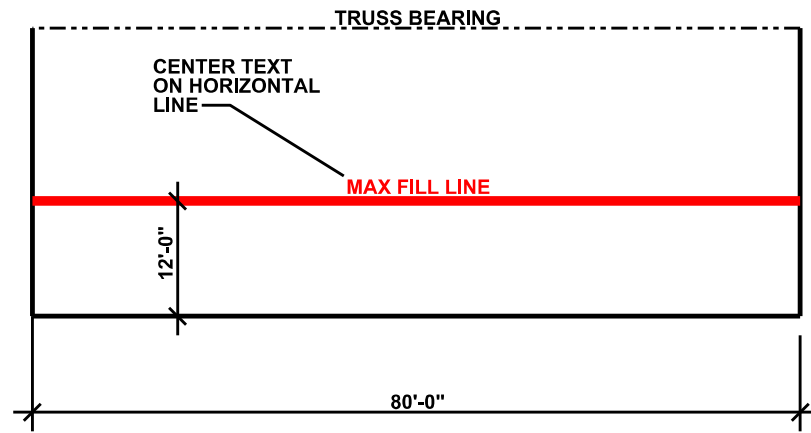
5B. EAST SIDE

5. ENLARGED DOWNSPOUT PROFILES

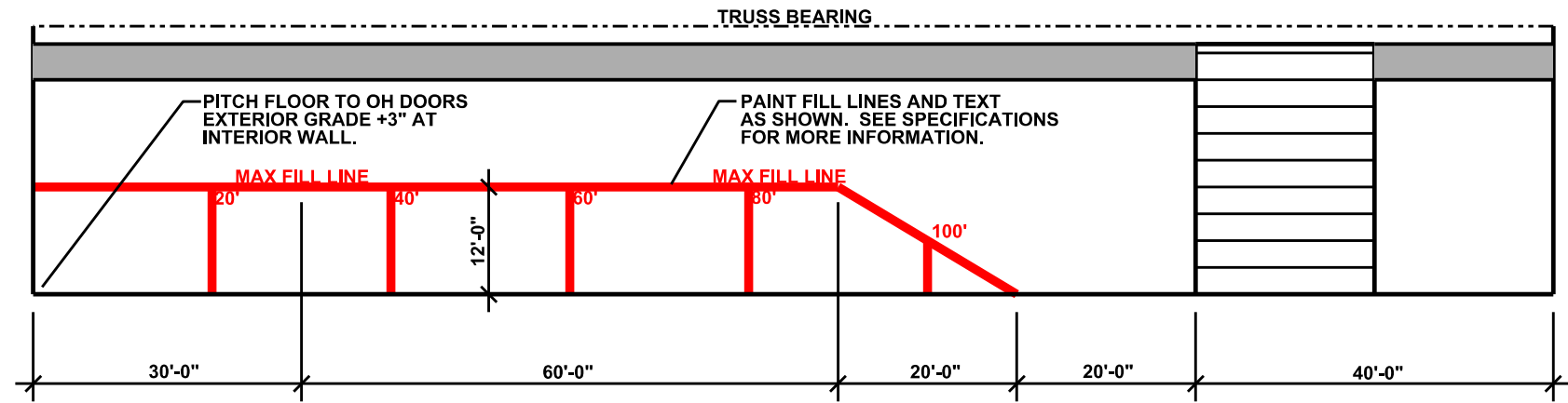
**CITY OF MADISON - ENGINEERING
CONTRACT 8605
WEST BADGER RD. SALT BARN**

SITE CONSTRUCTION DETAILS

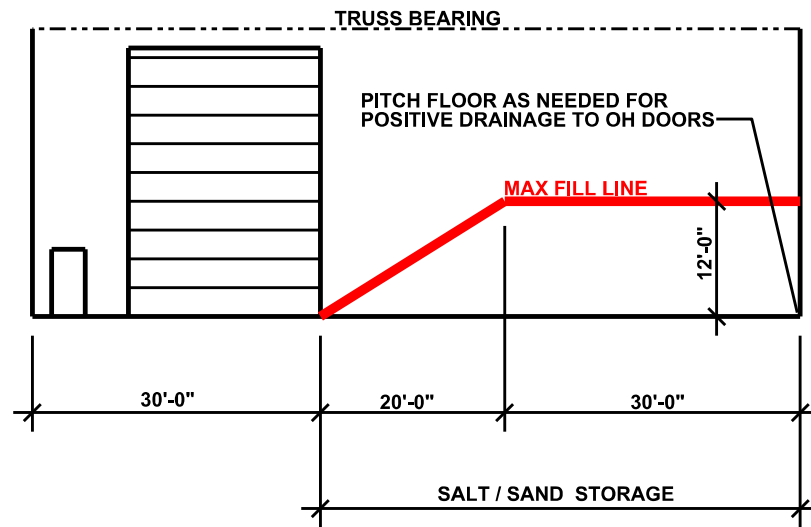
5



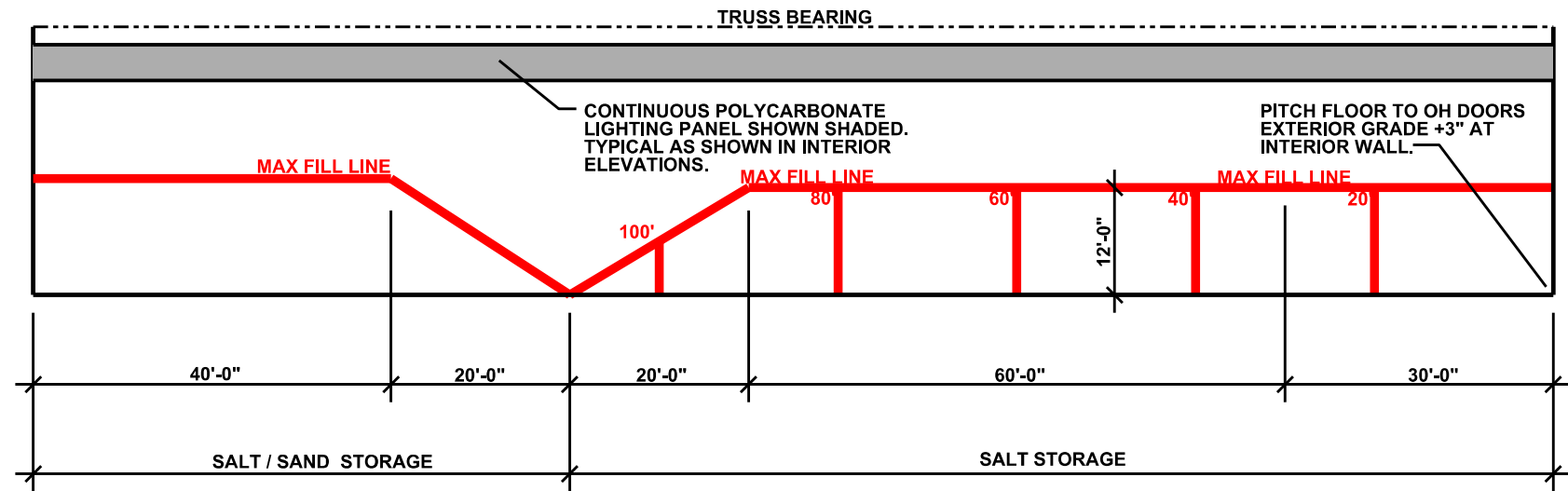
**1. SOUTH INTERIOR ELEVATION
 SALT / SAND STORAGE (BASE BID)**



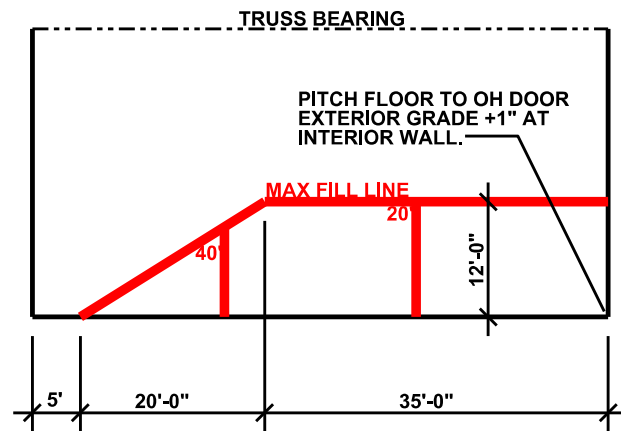
2. WEST INTERIOR ELEVATION SALT / SAND STORAGE (BASE BID)



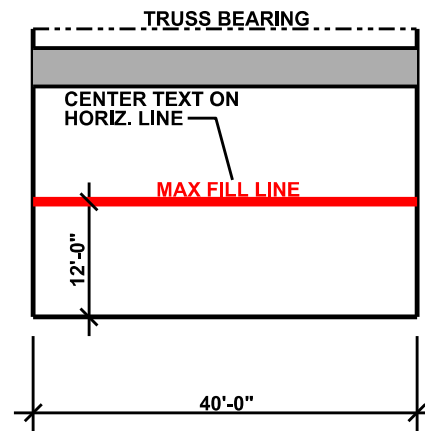
**3. NORTH INTERIOR ELEVATION
 SALT / SAND STORAGE (BASE BID)**



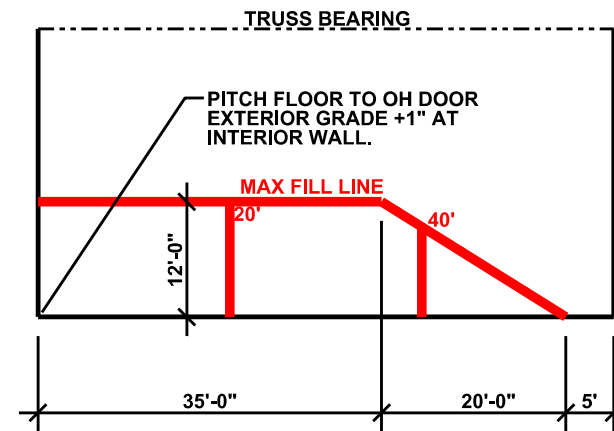
4. EAST INTERIOR ELEVATION SALT / SAND STORAGE (BASE BID)



5. NORTH



6. EAST

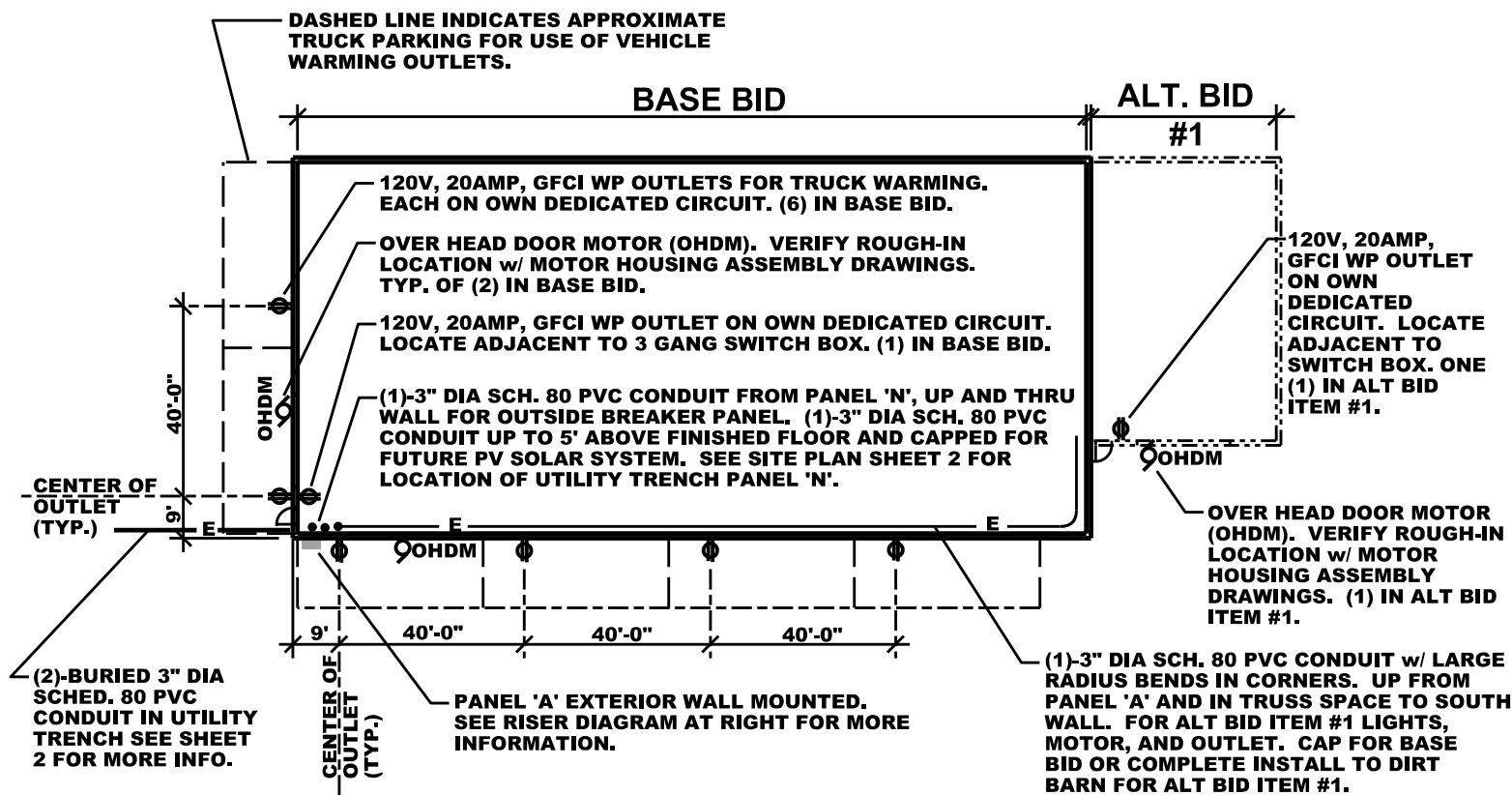


7. SOUTH

GENERAL NOTES:

1. CONCEPTUAL DRAWING ONLY, NOT FOR CONSTRUCTION. SEE SPECIFICATION 41 52 00 BULK MATERIAL STORAGE FOR MORE INFORMATION.
2. THIS SHEET FOR USE IN PAINTING FILL LINES AND DEPTH MARKINGS AS INDICATED IN THE SPECIFICATION AND ON THESE ELEVATIONS.

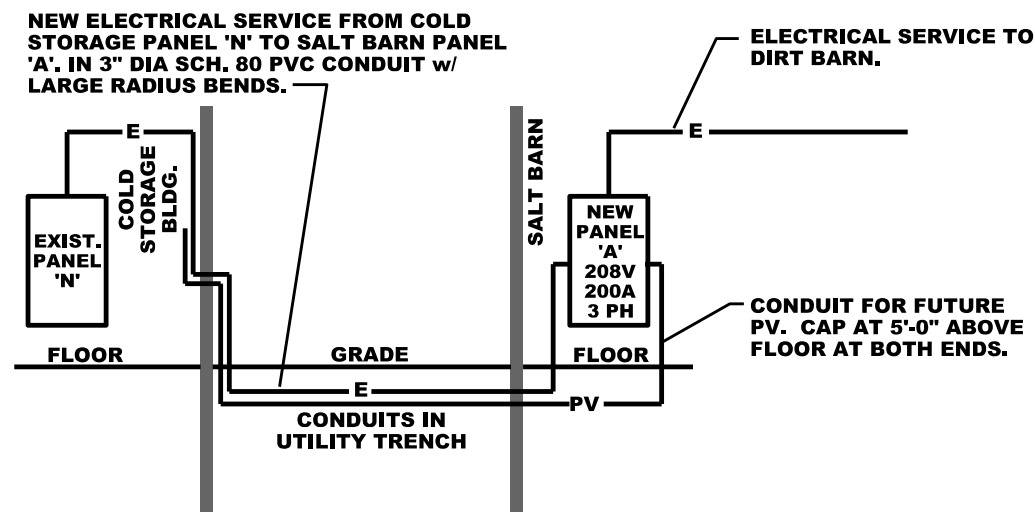
INTERIOR ELEVATIONS DIRT STORAGE (ALT. BID ITEM #1)



ELECTRICAL PLAN

ELECTRICAL INSTALLATION NOTES:

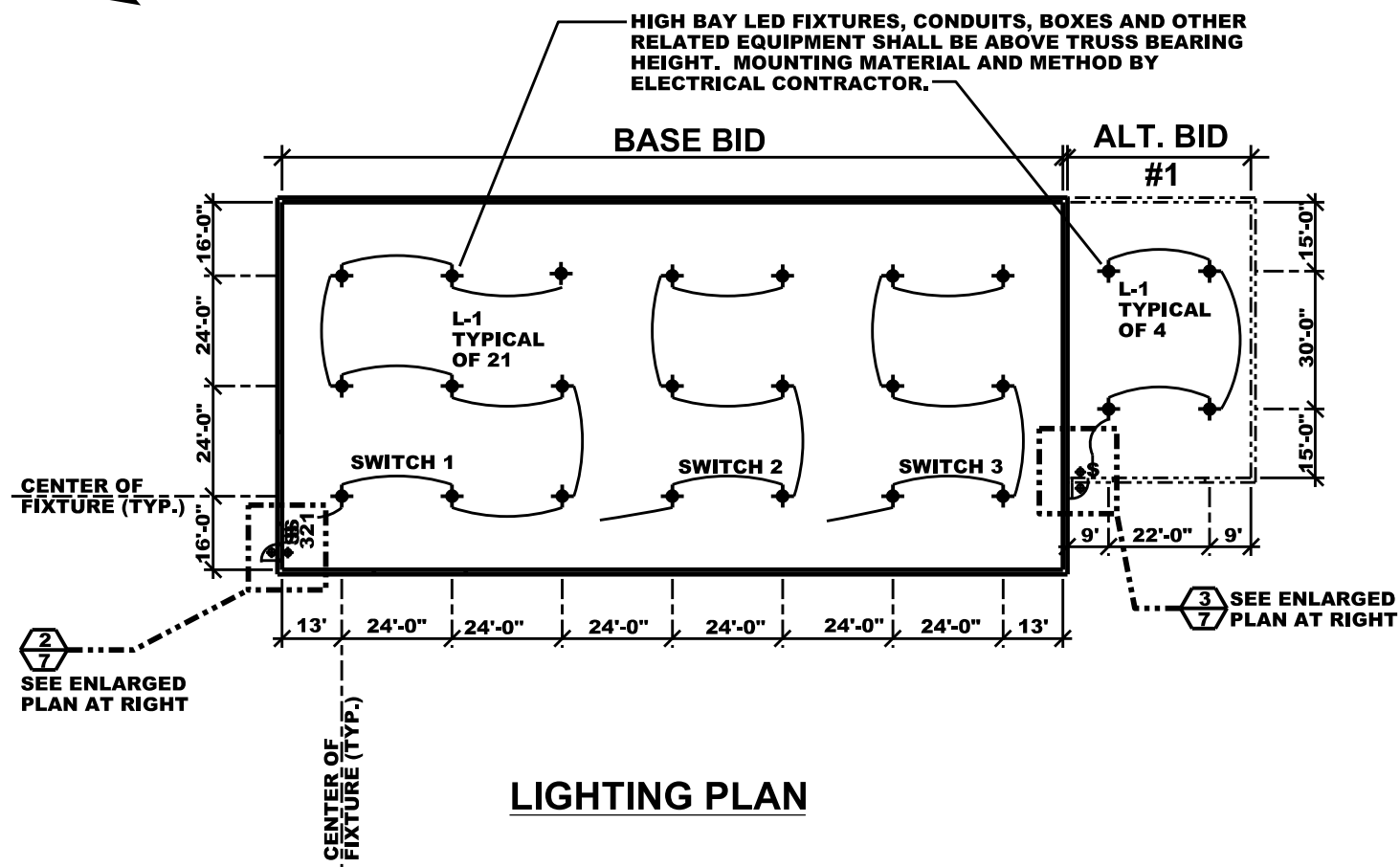
1. THE ELECTRICAL CONTRACTOR SHALL BE RESPONSIBLE FOR REVIEWING ALL PLANS AND SPECIFICATIONS ASSOCIATED WITH THIS CONTRACT PRIOR TO BIDDING THE CONTRACT.
2. THE ELECTRICAL CONTRACTOR SHALL BE RESPONSIBLE FOR PROVIDING ALL PANELS, CONDUITS, AND WIRING AND OTHER RELATED MATERIALS REQUIRED FOR A CODE COMPLIANT INSTALLATION FOR THIS CONTRACT EXCEPT WHERE NOTED AS WORK BY OTHERS.
3. THE ELECTRICAL CONTRACTOR SHALL PROVIDE SUBMITTALS FOR EQUIPMENT AND MATERIALS TO THE OWNER FOR APPROVAL PRIOR TO ORDERING ANY MATERIALS OR EQUIPMENT.
4. THE ELECTRICAL CONTRACTOR SHALL COORDINATE WITH ALL OTHER TRADES PRIOR TO INSTALLING ANY EQUIPMENT.
5. ALL CONDUIT, FITTINGS, PULL BOXES, AND OTHER RELATED MATERIALS SHALL BE SCHEDULE 80 PVC UNLESS OTHERWISE NOTED. ALL BURIED BENDS SHALL BE LARGE RADIUS SWEEPS. NO BURIED PULL BOXES WILL BE PERMITTED.
6. ALL OUTLETS TO BE GFCI w/ WEATHERPROOF COVERS UNLESS OTHERWISE NOTED.
7. ALL CONTROL WIRING SHALL BE IN SEPARATE CONDUIT FROM LINE VOLTAGE.
8. ALL OUTLETS, LIGHTS AND MOTORS IN BASE BID (SALT BARN) AND ALT. BID ITEM #1 (DIRT BARN) SHALL BE POWERED FROM EXTERIOR PANEL 'A'.



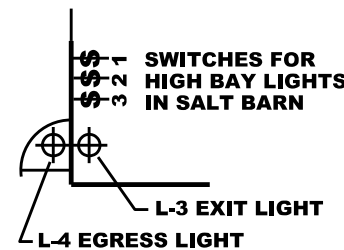
1. ELECTRICAL DISTRIBUTION SCHEMATIC

LIGHT FIXTURES:

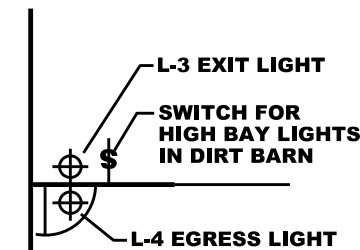
- L-1; ALTECH ELECTRONICS HIGH BAY LED, U-UHBHO-150-50-165-DTG-1-1-H-D(4)-BL; 150W, 5000K, 120/277, TEMPERED GLASS LENS, HOOK MOUNT, BLACK, -30°F; 10 YEAR WARRANTY
- L-2; SEE SHEET EL-100 FOR PHOTOMETRICS, LIGHT SCHEDULE, QUANTITIES AND LOCATIONS.
- L-3; EXIT-EMERGENCY COMBO FOR COLD WEATHER, THE LIGHTING SOURCE, WW12SVX12N-1-R-D-4X-2LA-D-CW4; -40°F; WET LOCATION WALL MOUNTED; INTEGRAL Ni-Cd BATTERY; 120V; RED LETTERING
- L-4; EXTERIOR LED w/ EMERGENCY LIGHT FOR COLD WEATHER, THE LIGHTING SOURCE, BZ-LUX-ACSD-CW; -20°F WALL MOUNTED; INTEGRAL Ni-Cd BATTERY; WET LOCATION; 120/277V; 12W; 5000k; w/ DAY/NIGHT PHOTO SENSOR, -4°F



LIGHTING PLAN



2. ENLARGED EXIT LIGHTING BASE BID



3. ENLARGED EXIT LIGHTING ALT. BID ITEM #1



Client:
Owner

Project Name:
(Review Set)

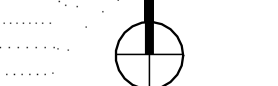
Location:
Enter address here

Contract:
Project:

Revisions

No.	Description

Project North
TRUE

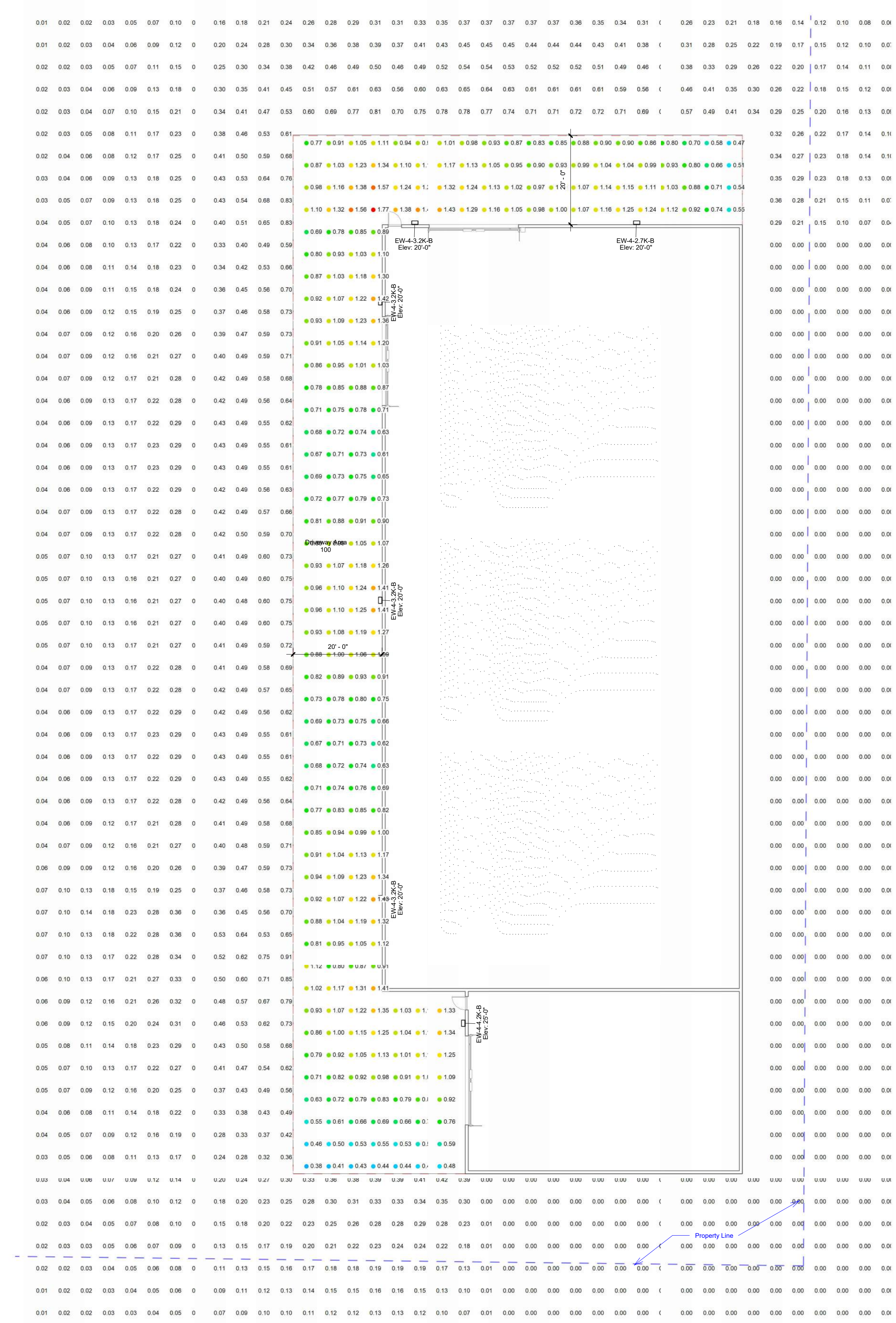


Site Lighting

EL 100

Area	Activity	Required Minimum	Actual Minimum	Minimum Compliance (Actual / Required)	Actual Average	Required Maximum Average	Maximum Average Compliance (Actual / Required)	Required Maximum Uniformity	Actual Uniformity	Uniformity Compliance (Actual / Required)	Required Maximum Power Density	Actual Power Density	Power Density Compliance (Actual / Required)	Total Lighting Load
Driveway Area	Driveway (Med Activity)	0.33 fc	0.38 fc	115%	0.95 fc	1.5 fc	63%	5	2.5	50%	0.06 W/ft²	0.024 W/ft²	41%	172 VA

Type Mark	Description	Est. Count	Model	URL	Apparent Load	Luminaire Flux	Color Temperature	Efficiency	Luminaire Maintenance	Specification
EW-4-2.7K-8	Exterior Wall Type 4 - Black	4	Garco 121-16L-400-CW-G4-LINV-DO-8K	www.sipnly.com	22 VA	2654 lm	5000 K	121 lm/W	L70 @ 100K hours	28.56.00 - Exterior Lighting
EW-4-3.2K-8	Exterior Wall Type 4 - Black	4	Garco 121-16L-530-CW-G4-LINV-DO-8K	www.sipnly.com	28 VA	3214 lm	5000 K	115 lm/W	L70 @ 100K hours	26.56.00 - Exterior Lighting
EW-4-4.2K-8	Exterior Wall Type 4 - Black	4	Garco 121-16L-700-CW-G4-LINV-DO-8K	www.sipnly.com	38 VA	4217 lm	5000 K	111 lm/W	L70 @ 100K hours	23.56.00 - Exterior Lighting



① EL Site 1/16" = 1'-0"

